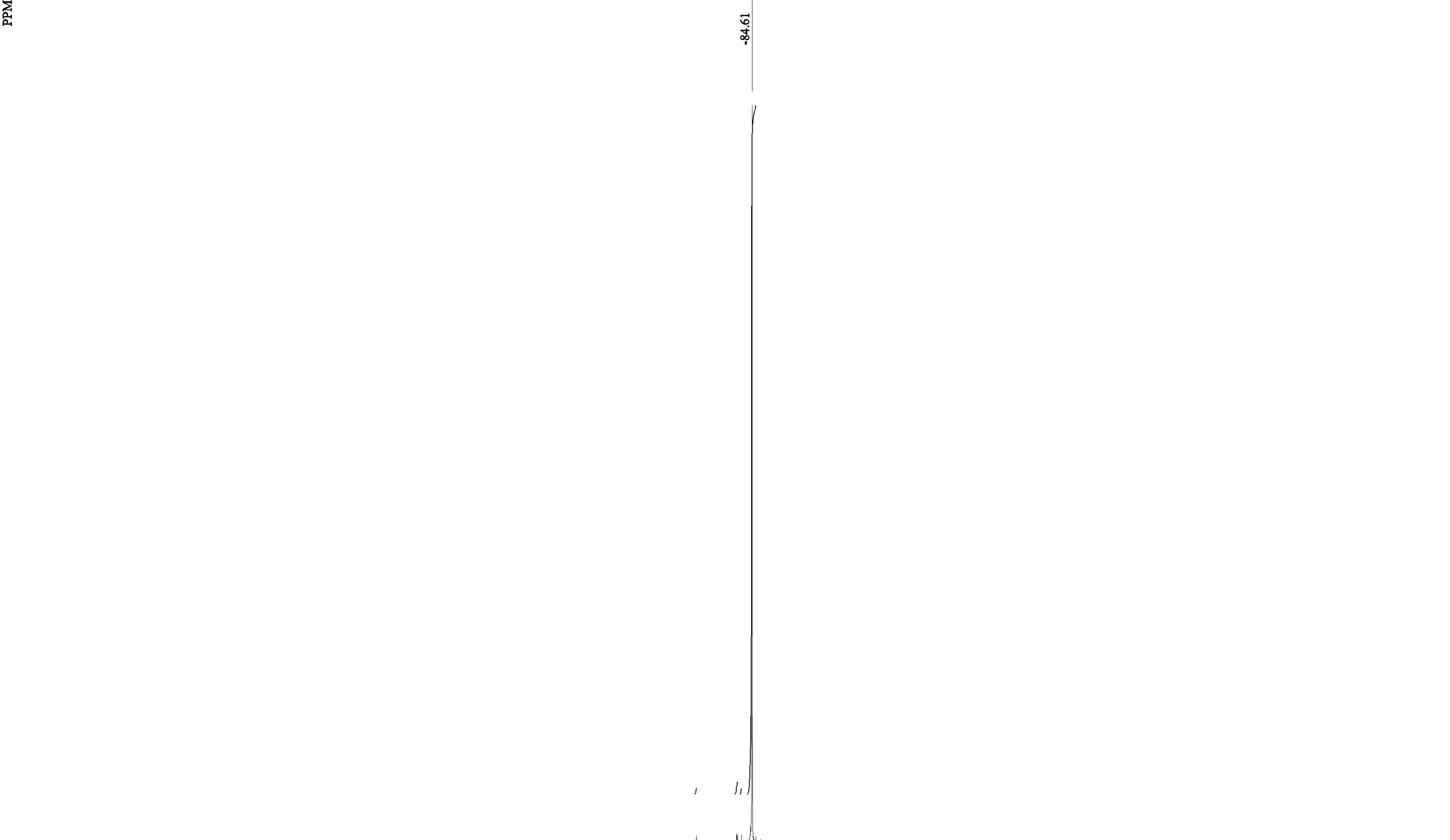


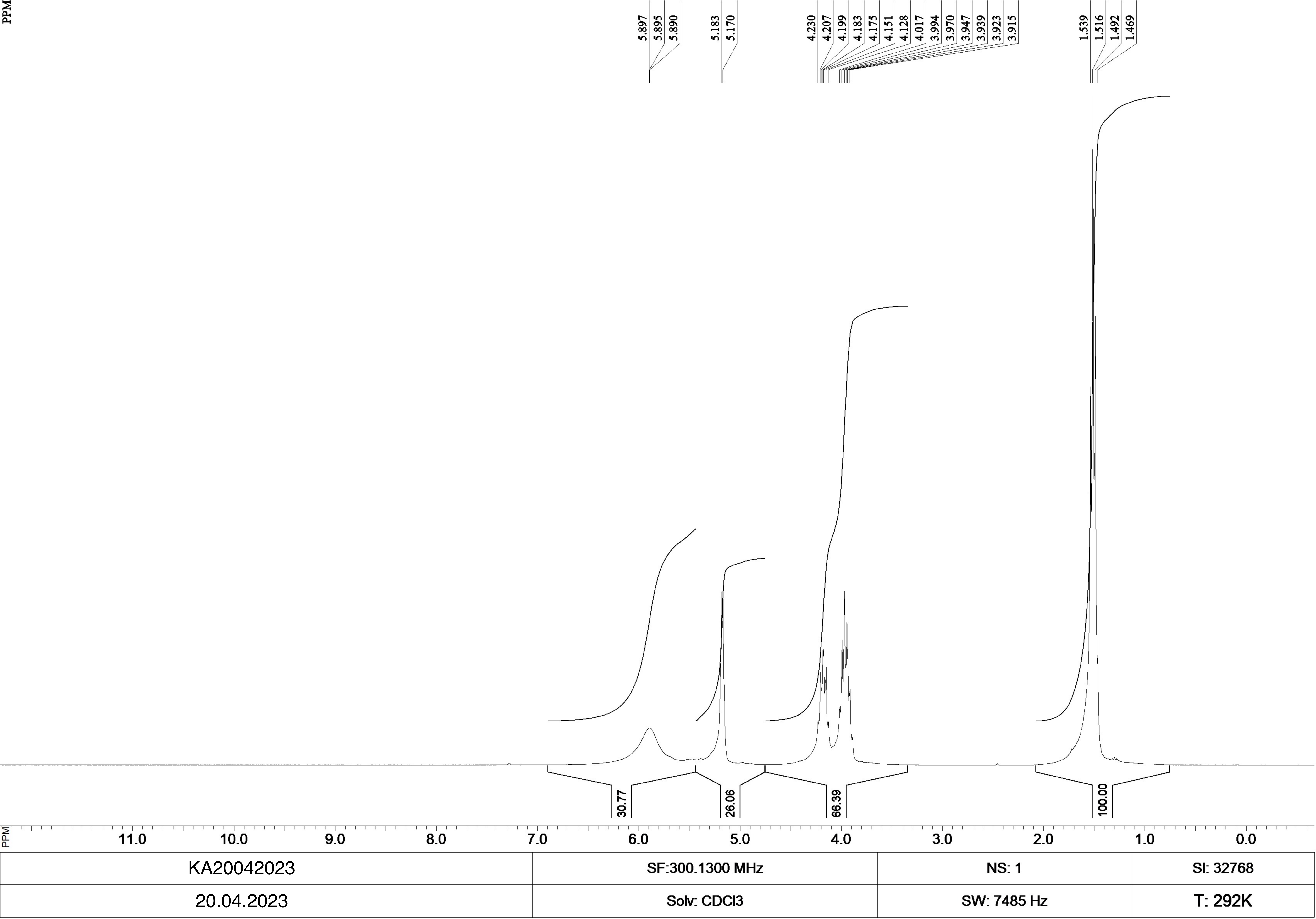
PPM



0.88
1.84
0.85
100.00

PPM 30 20 10 0 -10 -20 -30 -40 -50 -60 -70 -80 -90 -100 -110 -120 -130 -140 -150 -160 -170 -180 -190

KA20042023	SF:282.4044 MHz	NS: 1	SI: 65536
20.04.2023	Solv: CDCl3	SW: 67568 Hz	T: 292K



KA20042023

SF:300.1300 MHz

NS: 1

SI: 32768

20.04.2023

Solv: CDCl3

SW: 7485 Hz

T: 292K