

1904-2023-1830

SF: 282.4044 MHz

NS: 1

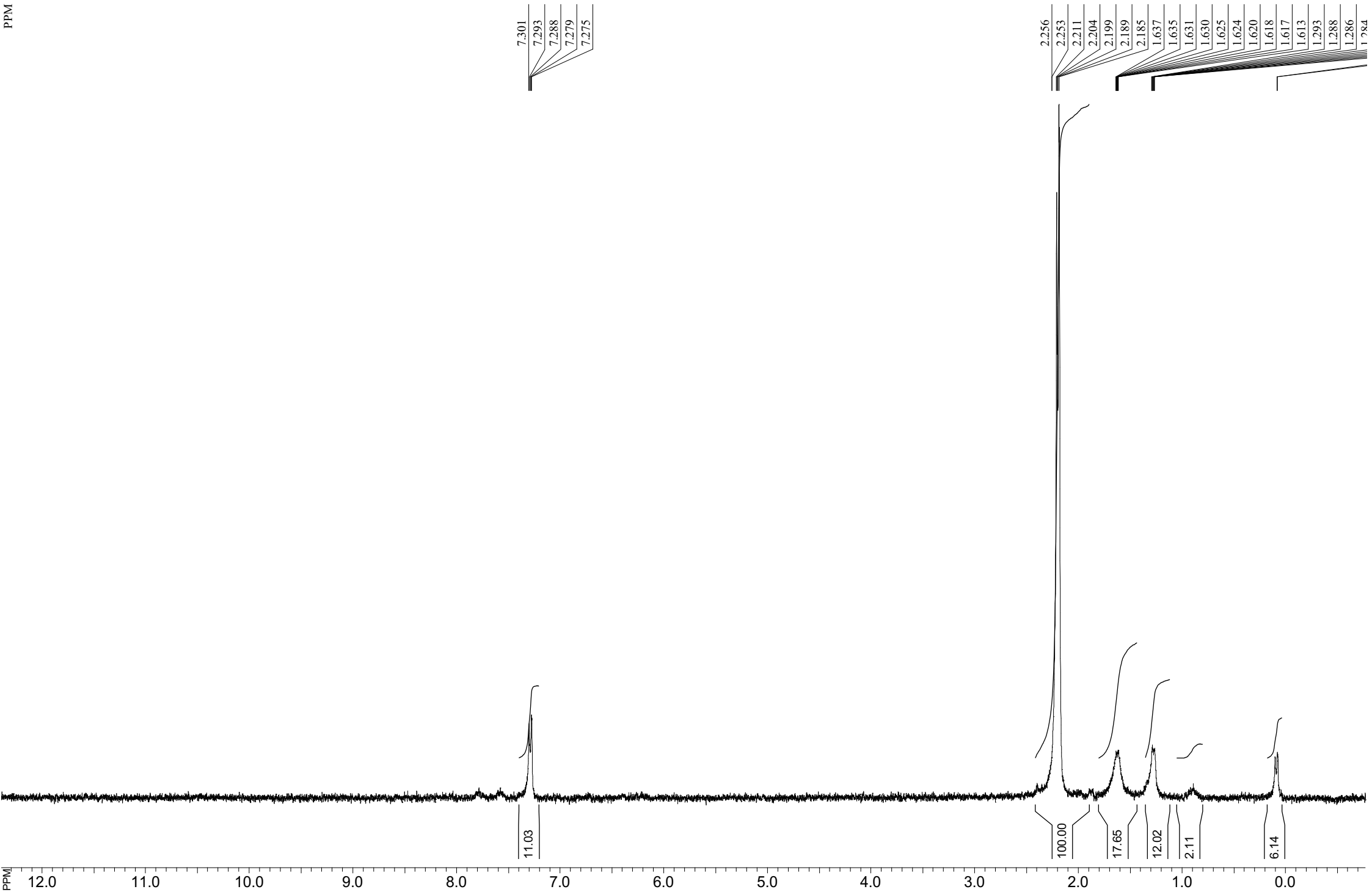
SI: 65536

19-Apr-2023

Solv: CDCl3

SW: 67568 Hz

T: 292K



1904-2023-1830

SF:300.1300 MHz

NS: 1

SI: 32768

19-Apr-2023

Solv: CDCl3

SW: 7485 Hz

T: 292K